

Upgrade Your Old Matrix Asher Etcher



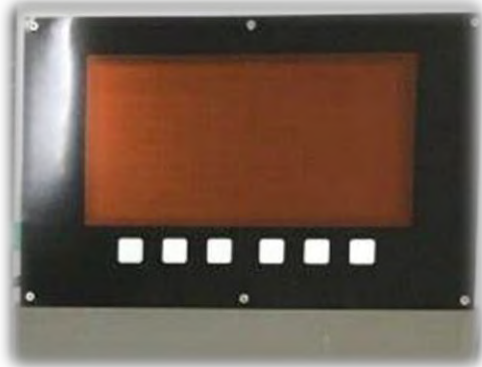
Upgrade Kits for Matrix 101 102 103 104 105 106 205 206 303 403 405

Why Upgrade Your Old Matrix Asher Etcher

1. Low Costs Solution of Obsolete Parts



Obsolete
Frog Robot



Obsolete
Display



Obsolete
RF Generator



Obsolete
PCBs



Obsolete
Process Card

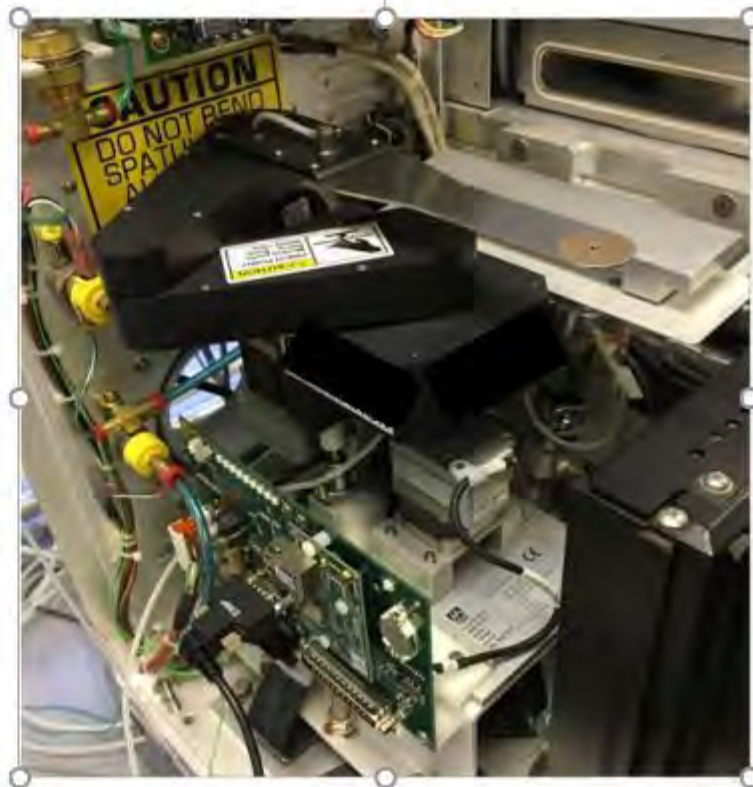
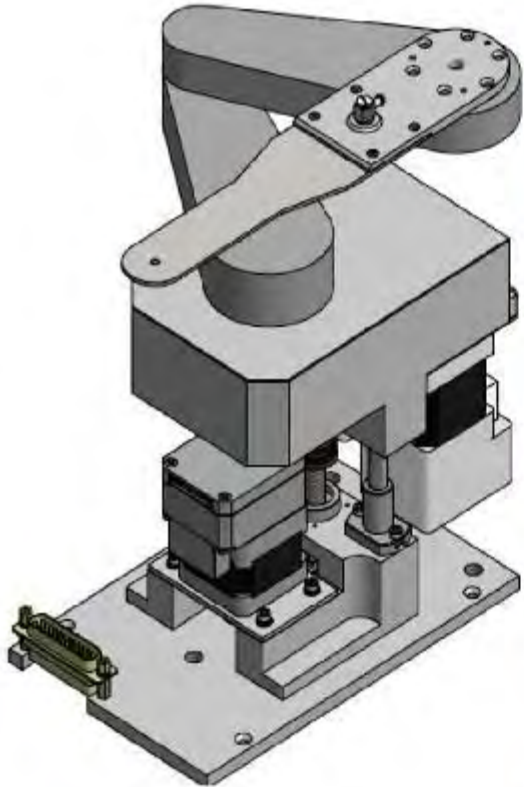
All specification and information here are subject to change without notice and cannot be used for purchase and facility plan. All legacy equipment trademarks belong to O.E.M.. © 2021 Allwin21 Corp. All Rights Reserved.

Upgrade Kits for Matrix 101 102 103 104 105 106 205 206 303 403 405



Why Upgrade Your Old Matrix Asher Etcher

2. Solid Integrated Robotic Wafer Transfer



- **Stable**
- **Low Wafer Breakage**

All specification and information here are subject to change without notice and cannot be used for purchase and facility plan. All legacy equipment trademarks belong to O.E.M.. © 2021 Allwin21 Corp. All Rights Reserved.

Upgrade Kits for Matrix 101 102 103 104 105 106 205 206 303 403 405

Why Upgrade Your Old Matrix Asher Etcher

3. Air Cooling RF Generator



**Avoiding
Water Flood
in Fab/Lab**

All specification and information here are subject to change without notice and cannot be used for purchase and facility plan. All legacy equipment trademarks belong to O.E.M.. © 2021 Allwin21 Corp. All Rights Reserved.

Upgrade Kits for Matrix 101 102 103 104 105 106 205 206 303 403 405



Why Upgrade Your Old Matrix Asher Etcher

4. New Temperature Controller

**Will use the original
AC-2 and Transformer
From the old equipment**



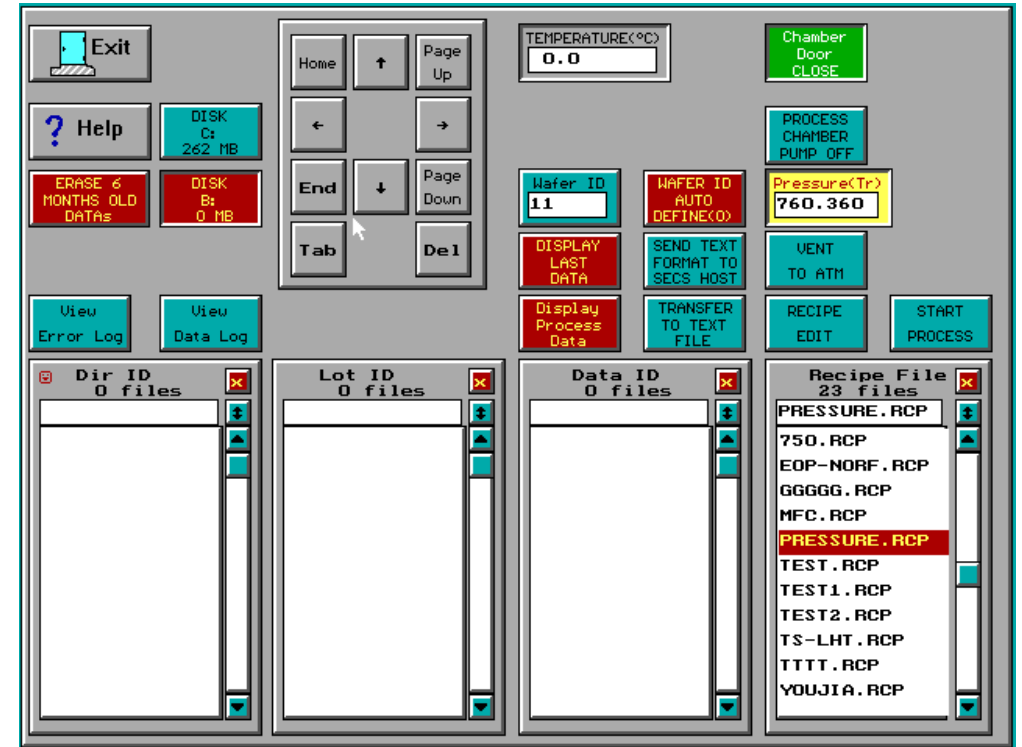
All specification and information here are subject to change without notice and cannot be used for purchase and facility plan. All legacy equipment trademarks belong to O.E.M.. © 2021 Allwin21 Corp. All Rights Reserved.

Upgrade Kits for Matrix 101 102 103 104 105 106 205 206 303 403 405



Why Upgrade Your Old Matrix Asher Etcher

5. PC Controller for Data Storage



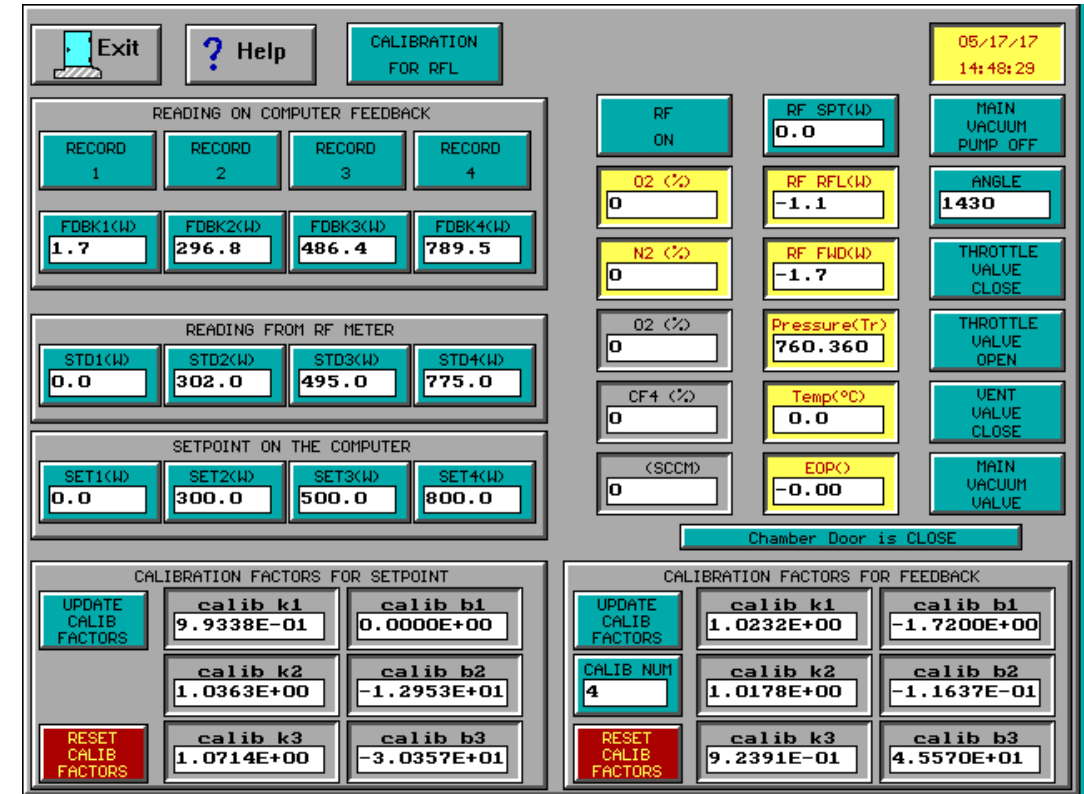
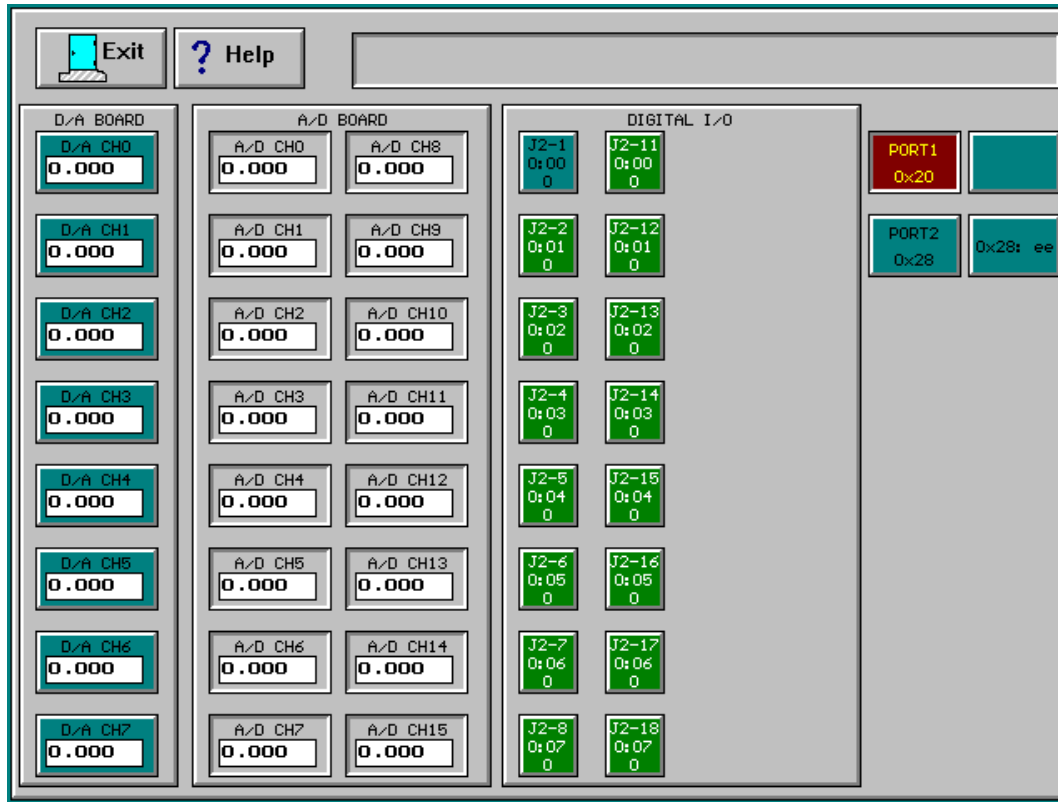
All specification and information here are subject to change without notice and cannot be used for purchase and facility plan. All legacy equipment trademarks belong to O.E.M.. © 2021 Allwin21 Corp. All Rights Reserved.

Upgrade Kits for Matrix 101 102 103 104 105 106 205 206 303 403 405



Why Upgrade Your Old Matrix Asher Etcher

6. Easier Maintenance, Calibration

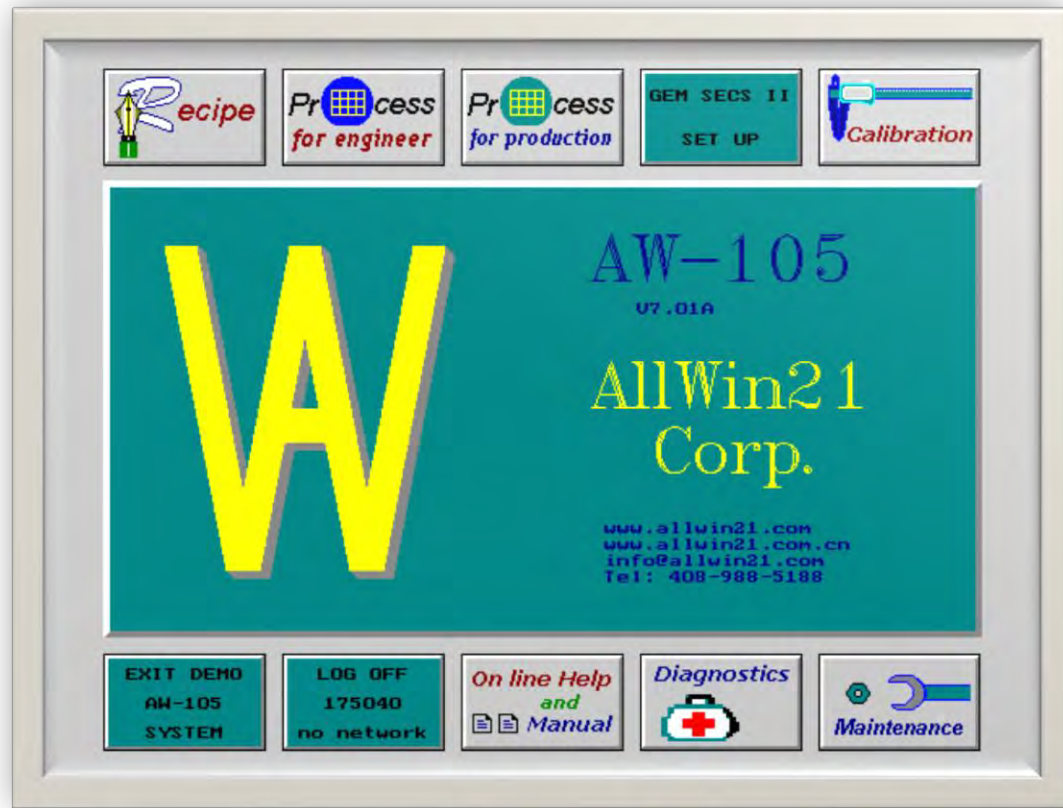


All specification and information here are subject to change without notice and cannot be used for purchase and facility plan. All legacy equipment trademarks belong to O.E.M.. © 2021 Allwin21 Corp. All Rights Reserved.

Upgrade Kits for Matrix 101 102 103 104 105 106 205 206 303 403 405

Why Upgrade Your Old Matrix Asher Etcher

7. Touch Screen GUI



Will provide dimensions for customer to cut the cover for the new touch screen frame.

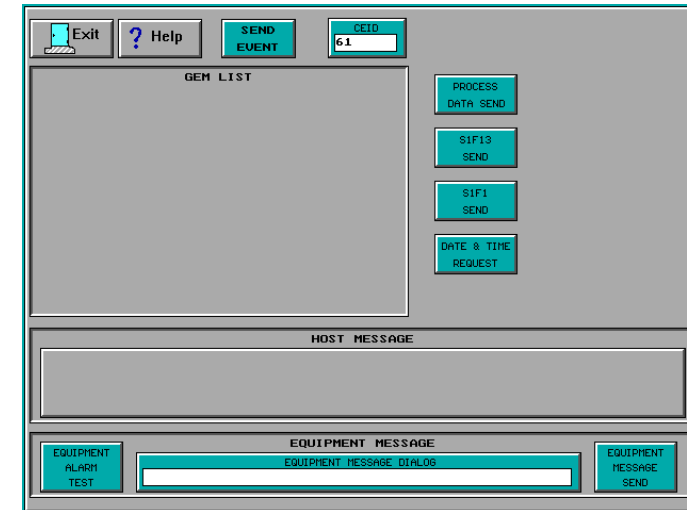
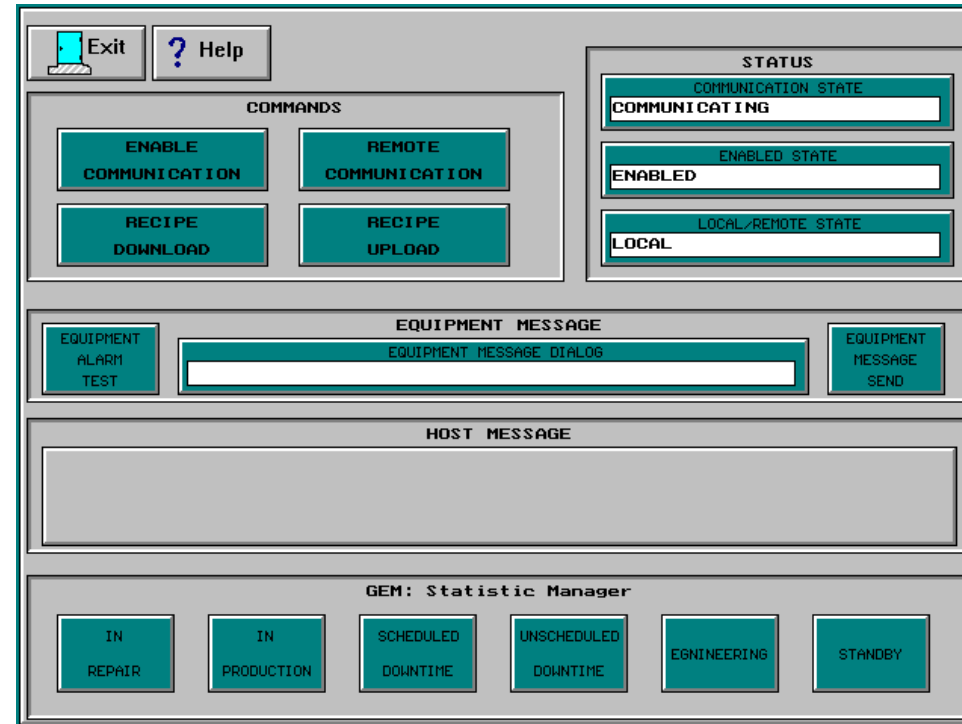
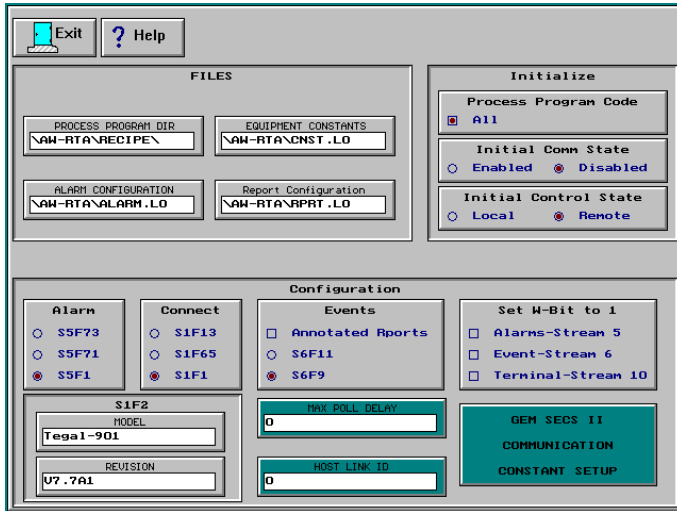
All specification and information here are subject to change without notice and cannot be used for purchase and facility plan. All legacy equipment trademarks belong to O.E.M.. © 2021 Allwin21 Corp. All Rights Reserved.

Upgrade Kits for Matrix 101 102 103 104 105 106 205 206 303 403 405



Why Upgrade Your Old Matrix Asher Etcher

8. GEM/SEC II Function



Upgrade Kits for Matrix 101 102 103 104 105 106 205 206 303 403 405

Why Upgrade Your Old Matrix Asher Etcher

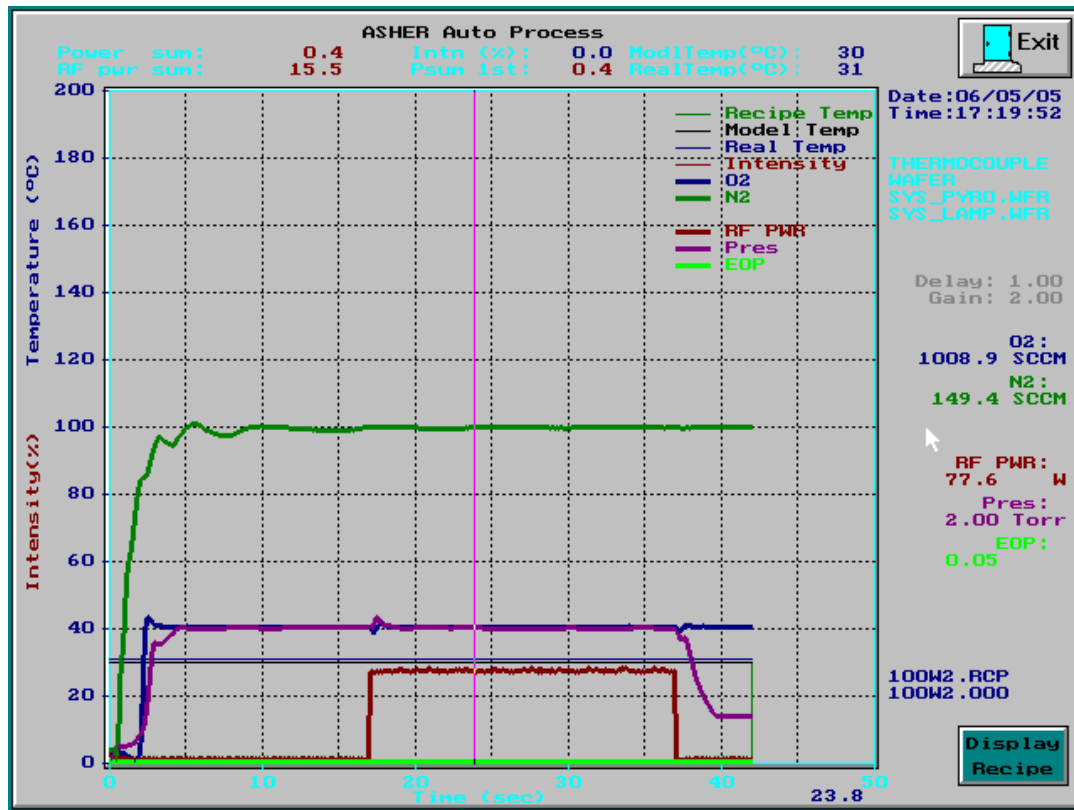
9. EOP Function

The screenshot displays the EOP Function configuration screen. At the top left is an 'Exit' button with a computer icon. To the right are three buttons: 'EOP NORMALIZE DISABLE' (teal), 'EOP PERCENTAGE ENABLE' (red), and 'PLASMAON EOP' (teal) with a value of '0.00'. A status box in the top right corner contains the text: 'RECIPE VERSION: AU-04', 'CREATED: 04-28-2017', and 'CHANGED: 04-26-2017'. The main area contains several input fields: 'Normalize Start time (sec)' with value '10', 'Normalize Time (sec)' with value '0', 'Recipe Normalize k' with value '0.000000', 'System Normalize k' with value '0.000000', and 'Normalized Usalib' with value '0.00'. On the right side, there are 'Percentage Start time (sec)' with value '35', 'SLOPE GAIN FACTOR' with value '1.0', 'SLOPE AVERAGE NUM' with value '10', and 'Slope check Start time (sec)' with value '10'. At the bottom right, there are 'EOP HARDWARE GAIN' with value '4' and 'EOP HARDWARE OFFSET' with value '2.00'. An 'EOP SENSE NEGATIVE LEVEL' button is also present in the middle section.

Upgrade Kits for Matrix 101 102 103 104 105 106 205 206 303 403 405

Why Upgrade Your Old Matrix Asher Etcher

10. Stable , Repeatable, Real Time Control



Exit Help SHUT DOWN Auto Stop

FROM SLOT 1 LOT SIZE 25
WAFER NUM 25 UNLOADED 0

04/28/06 08:39:11 Time(sec) TEMP SPT(°C) 40 ANGLE(°) 180.00
Temp(°C) 0.0 Pressure(Torr) 5.000
Gain of EOP 1.50 EOP(°) 0.00
O2 Flow 0.04 RF SPT (W) 0.0
N2 Flow 2 RF FWD(W) 0.00
N/A Flow RF REUS(W) 0.00

LOT ID 0501001
STEP ID STEP1
RECIPE ID 100W.RCP

WAFER UNLOAD AUTO RUN

All specification and information here are subject to change without notice and cannot be used for purchase and facility plan. All legacy equipment trademarks belong to O.E.M.. © 2021 Allwin21 Corp. All Rights Reserved.

Upgrade Kits for Matrix 101 102 103 104 105 106 205 206 303 403 405

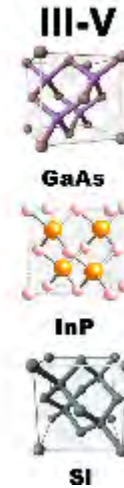
Options for Different Customers

- **Solid Integrated Robotic Wafer Transfer**
- **New AirCooling RF**
- **EOP Function**
- **GEM/SEC II Function**
- **Robot Control Board**
- **Professional Support**



Upgrade Kits for Matrix 101 102 103 104 105 106 205 206 303 403 405

Let's *All win* in the 21st Century



Email: sales@allwin21.com

Upgrade Kits for Matrix 101 102 103 104 105 106 205 206 303 403 405

