

Upgrade Your Old Lam AutoEtch Plasma Etcher



Upgrade Kit for Lam AutoEtch 490 590 690 790 Plasma Etcher

Why Upgrade Your Old Lam AutoEtch Plasma Etcher

1. Fast On-Site Upgrading



1-3 days on -site

All specification and information here are subject to change without notice and cannot be used for purchase and facility plan. All legacy equipment trademarks belong to O.E.M.. © 2021 Allwin21 Corp. All Rights Reserved.

Upgrade Kit for Lam AutoEtch 490 590 690 790 Plasma Etcher



Why Upgrade Your Old Lam AutoEtch Plasma Etcher

2. Low Costs Solution of Obsolete Parts



Obsolete
CRT Monitor



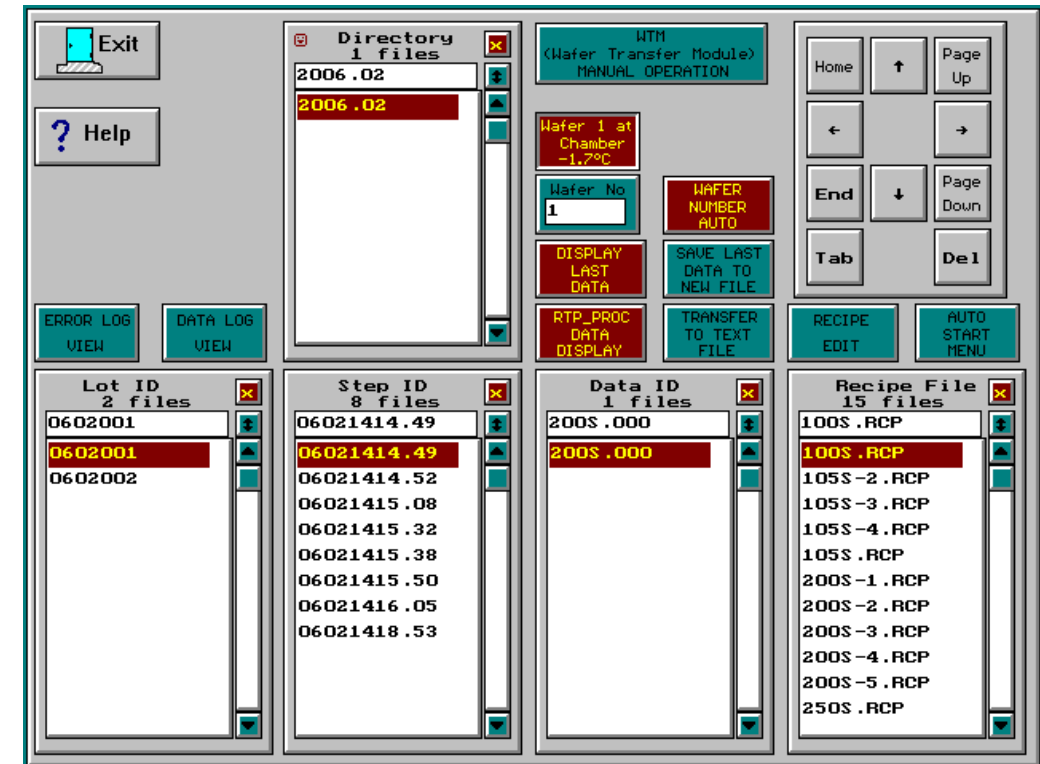
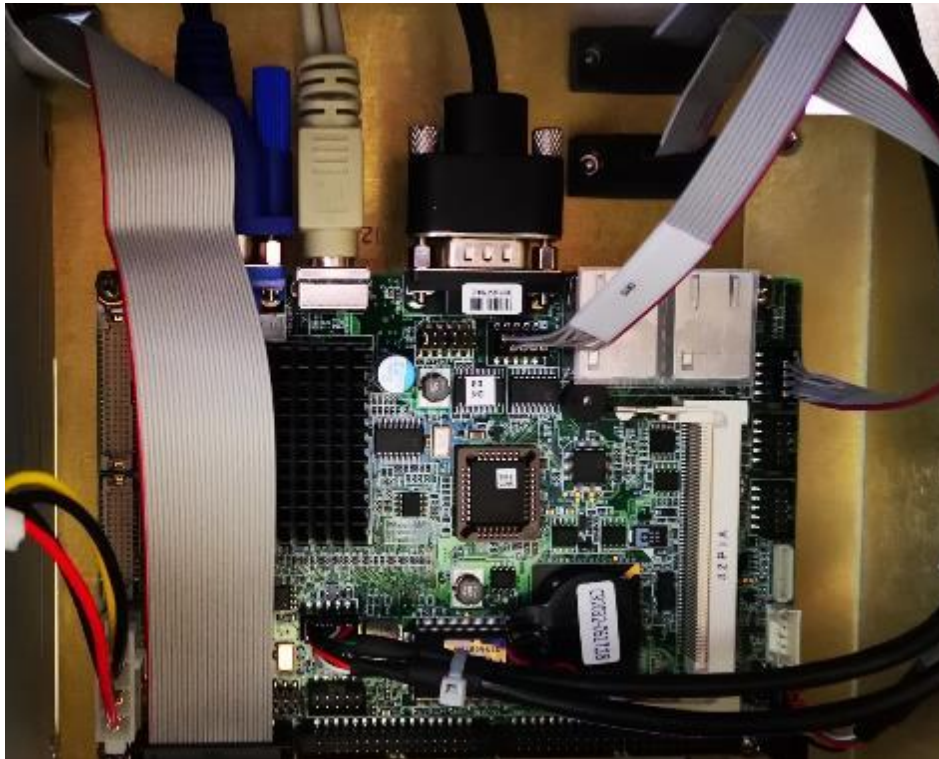
Obsolete
Master Module and Recipe Module

All specification and information here are subject to change without notice and cannot be used for purchase and facility plan. All legacy equipment trademarks belong to O.E.M.. © 2021 Allwin21 Corp. All Rights Reserved.

Upgrade Kit for Lam AutoEtch 490 590 690 790 Plasma Etcher

Why Upgrade Your Old Lam AutoEtch Plasma Etcher

3. PC Controller for Data Storage



All specification and information here are subject to change without notice and cannot be used for purchase and facility plan. All legacy equipment trademarks belong to O.E.M.. © 2021 Allwin21 Corp. All Rights Reserved.

Upgrade Kit for Lam AutoEtch 490 590 690 790 Plasma Etcher

Why Upgrade Your Old Lam AutoEtch Plasma Etcher

4. Touch Screen GUI



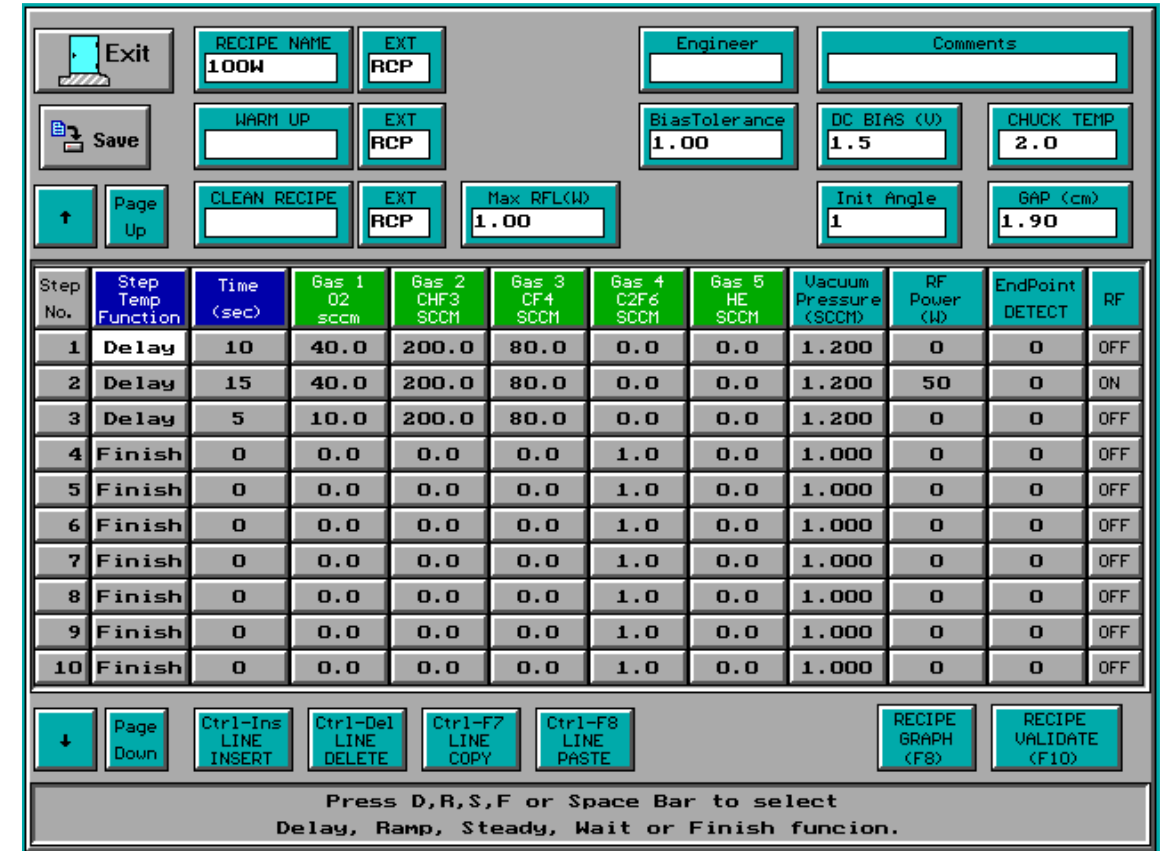
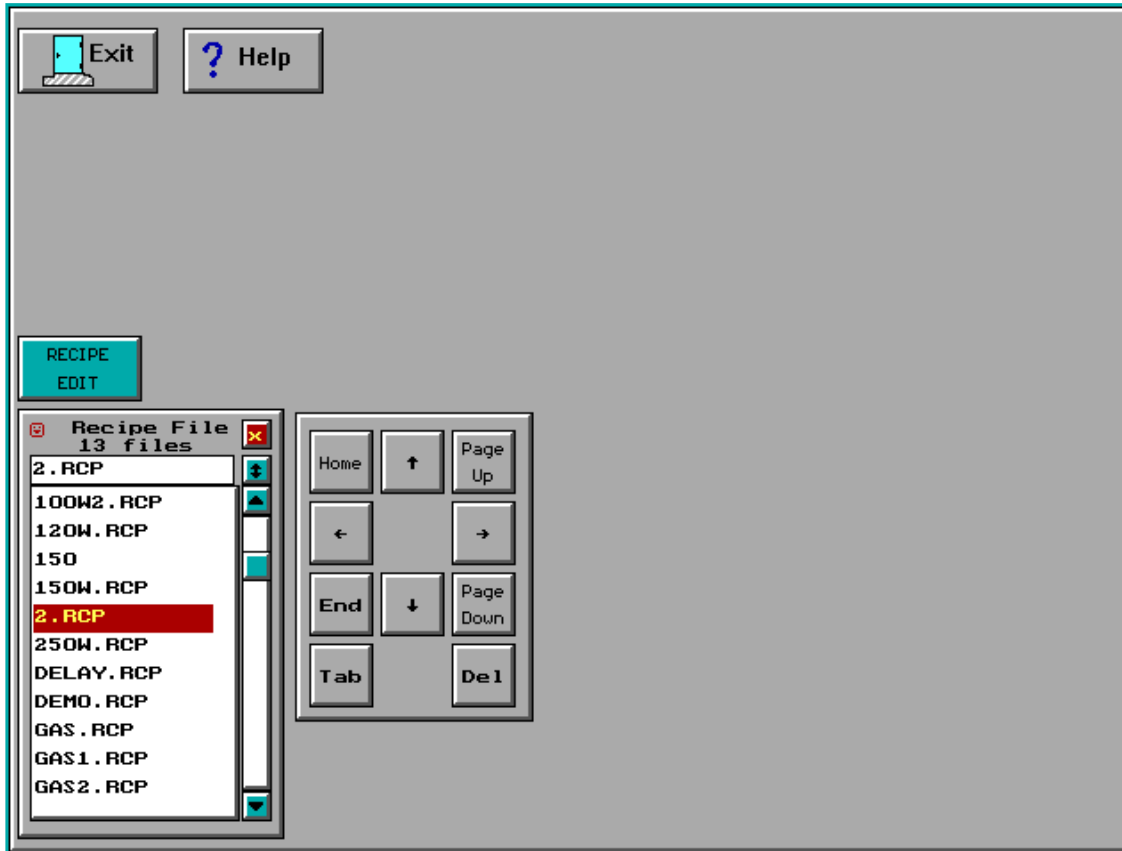
All specification and information here are subject to change without notice and cannot be used for purchase and facility plan. All legacy equipment trademarks belong to O.E.M.. © 2021 Allwin21 Corp. All Rights Reserved.

Upgrade Kit for Lam AutoEtch 490 590 690 790 Plasma Etcher



Why Upgrade Your Old Lam AutoEtch Plasma Etcher

5. Easier Recipe Edit



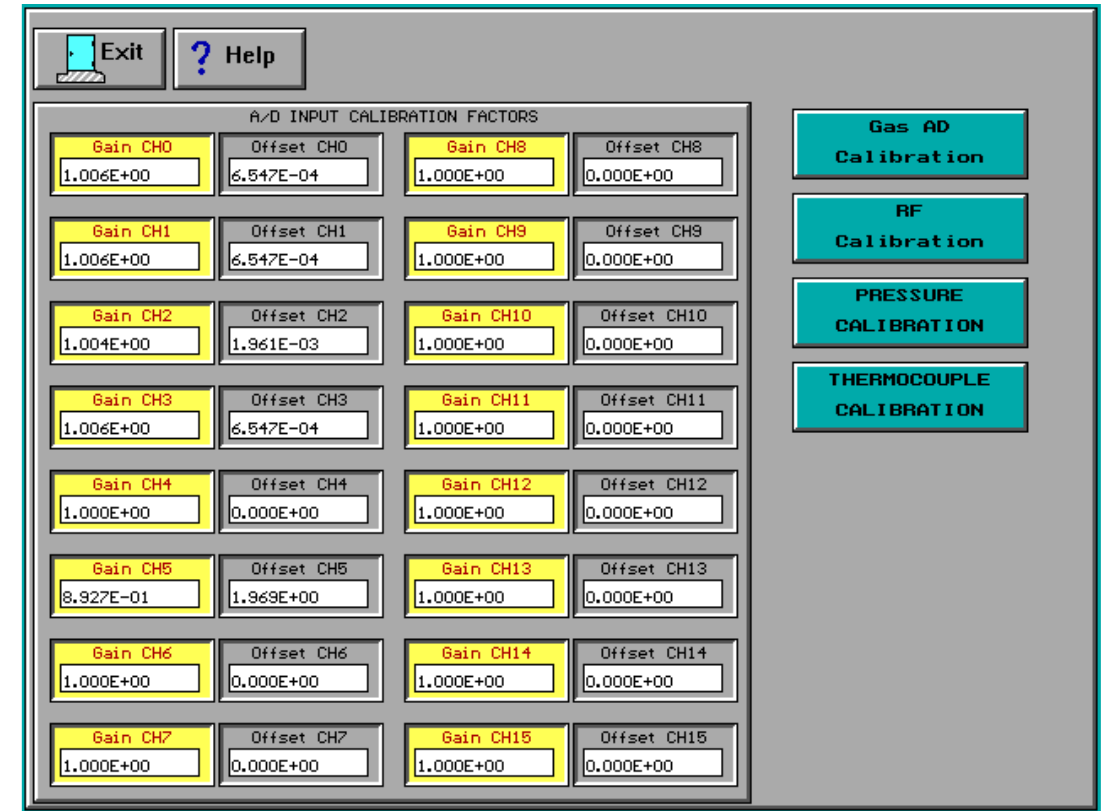
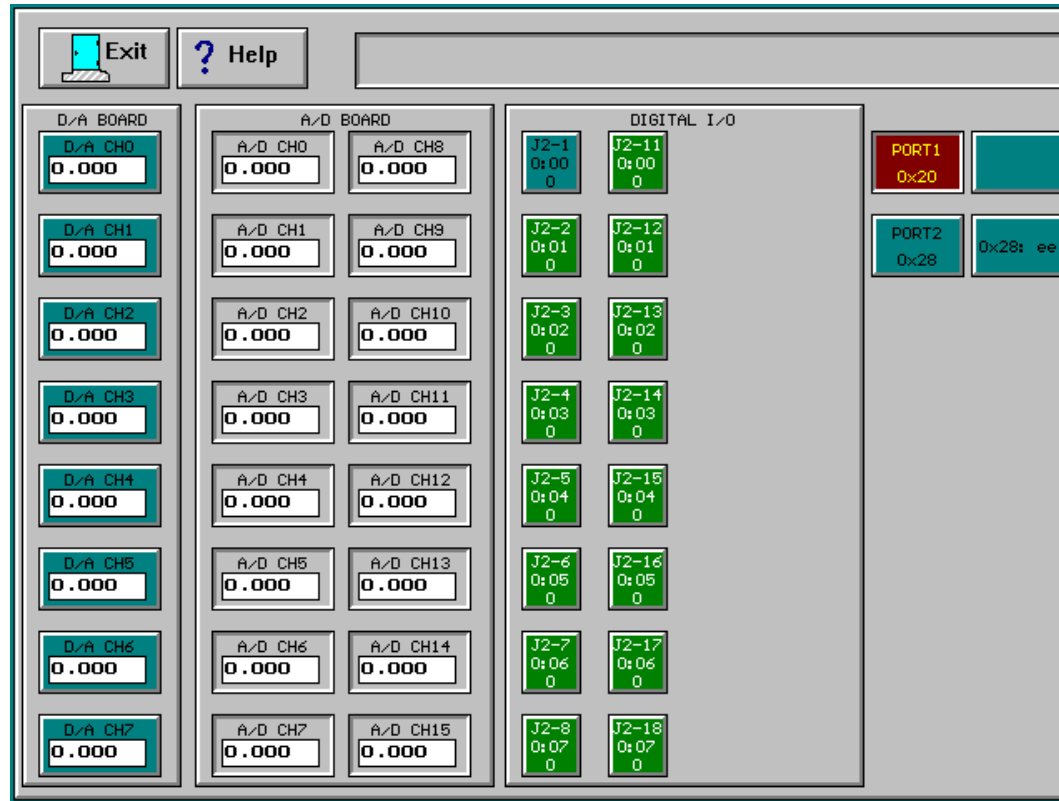
All specification and information here are subject to change without notice and cannot be used for purchase and facility plan. All legacy equipment trademarks belong to O.E.M.. © 2021 Allwin21 Corp. All Rights Reserved.

Upgrade Kit for Lam AutoEtch 490 590 690 790 Plasma Etcher



Why Upgrade Your Old Lam AutoEtch Plasma Etcher

6. Easier Maintenance, Calibration



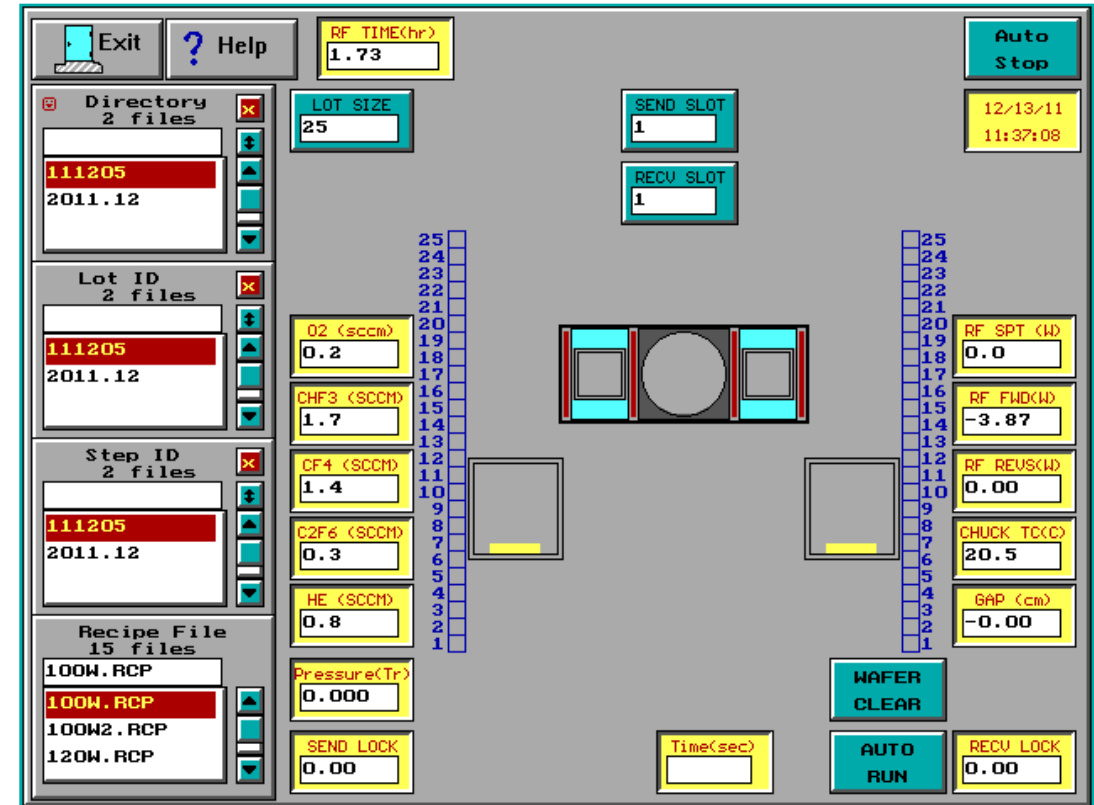
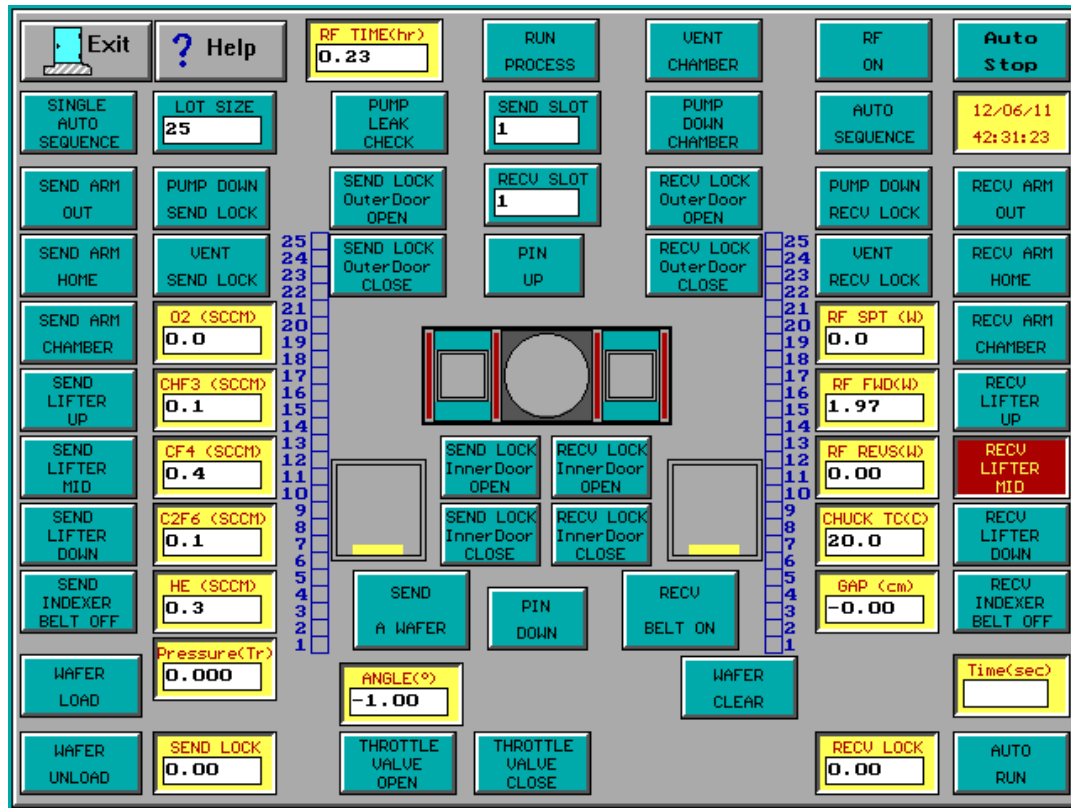
All specification and information here are subject to change without notice and cannot be used for purchase and facility plan. All legacy equipment trademarks belong to O.E.M.. © 2021 Allwin21 Corp. All Rights Reserved.

Upgrade Kit for Lam AutoEtch 490 590 690 790 Plasma Etcher



Why Upgrade Your Old Lam AutoEtch Plasma Etcher

7. Stable , Repeatable, Real Time Control



All specification and information here are subject to change without notice and cannot be used for purchase and facility plan. All legacy equipment trademarks belong to O.E.M.. © 2021 Allwin21 Corp. All Rights Reserved.

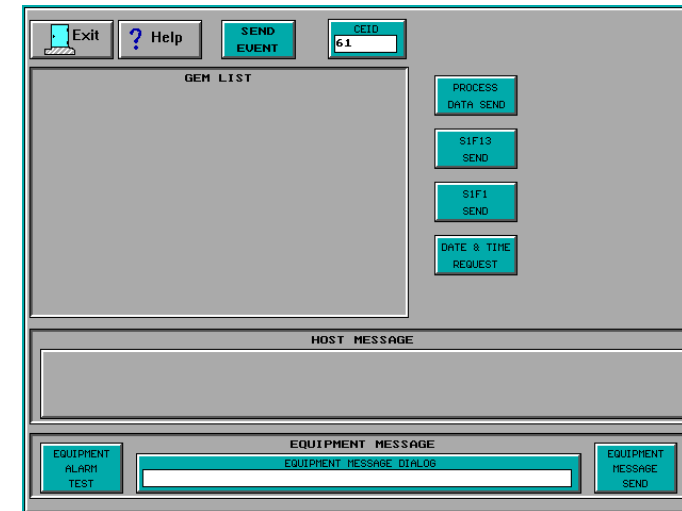
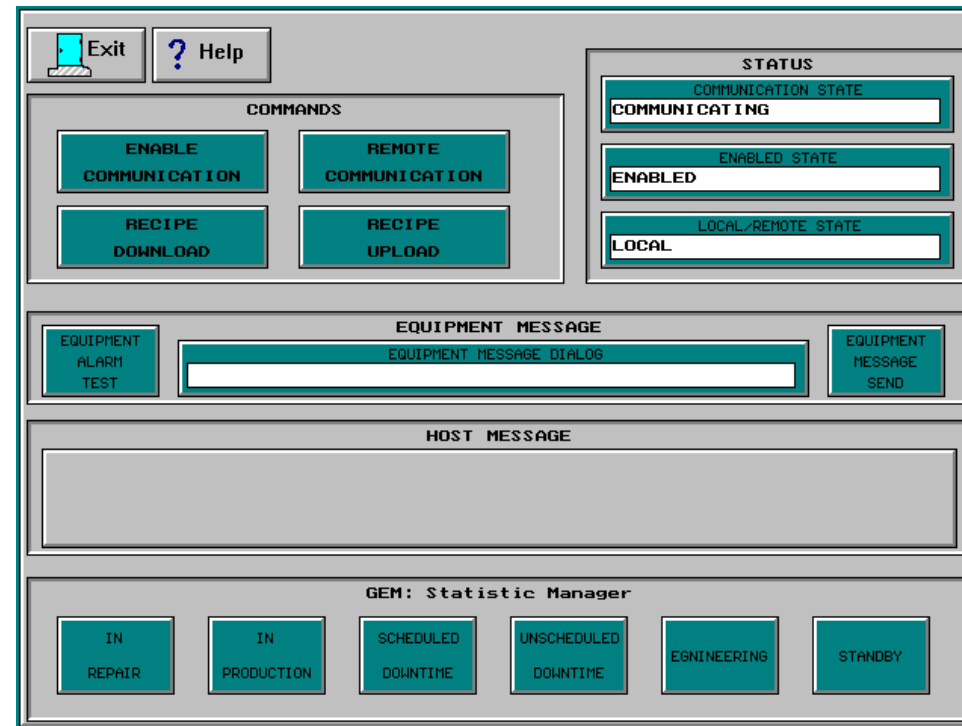
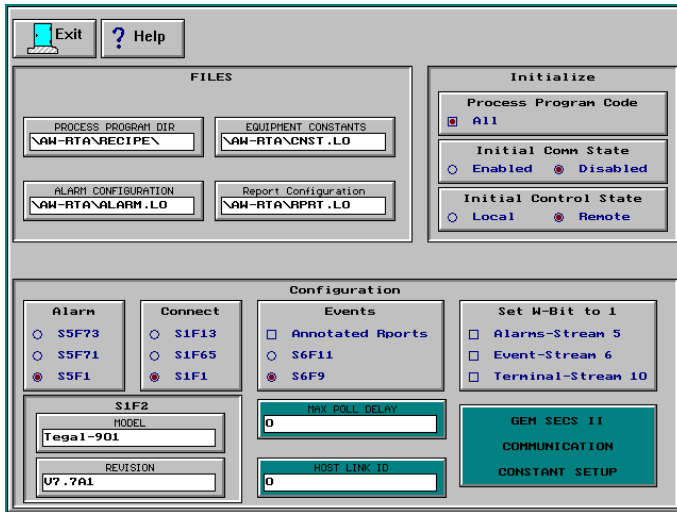
Upgrade Kit for Lam AutoEtch 490 590 690 790 Plasma Etcher



Why Upgrade Your Old Lam AutoEtch Plasma Etcher

8. GEM/SEC II Function

(Optional)



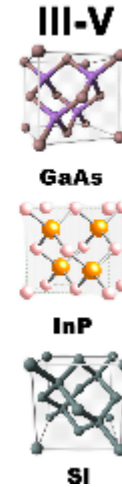
Upgrade Kit for Lam AutoEtch 490 590 690 790 Plasma Etcher

BOM of Upgrade Kit for Lam AutoEtch

NO.	P/N	Description	Quantity
1	098-0001-00	Lam Autoetch controller	1
2	821 00-41 00-066	STD Interface Board	1
3	092-0001-01	Cable, Control board to computer	1
4	022-0012	Cable,RS232,DB9F to DB25M	1
5	A5-0110	Flash Drive	1
6	AS-0112	Mouse	1
7	AS-0113	Keyboard	1

Upgrade Kit for Lam AutoEtch 490 590 690 790 Plasma Etcher

Let's *All win* in the 21st Century



Email: sales@allwin21.com

Upgrade Kit for Lam AutoEtch 490 590 690 790 Plasma Etcher

