

Upgrade Your Old Gasonics Aura 2000LL



Upgrade Kit for Gasonics Aura 2000LL Plasma Asher

Why Upgrade Your Old Gasonics Aura 2000LL

1.1. Low Costs Solution of Obsolete Parts

***Control Panel
Not Necessary***



All specification and information here are subject to change without notice and cannot be used for purchase and facility plan. All legacy equipment trademarks belong to O.E.M.. © 2021 Allwin21 Corp. All Rights Reserved.

Upgrade Kit for Gasonics Aura 2000LL Plasma Asher



Why Upgrade Your Old Gasonics Aura 2000LL

1.2. Low Costs Solution of Obsolete Parts



All specification and information here are subject to change without notice and cannot be used for purchase and facility plan. All legacy equipment trademarks belong to O.E.M.. © 2021 Allwin21 Corp. All Rights Reserved.

Upgrade Kit for Gasonics Aura 2000LL Plasma Asher

Why Upgrade Your Old Gasonics Aura 2000LL

2. New Temperature Control



All specification and information here are subject to change without notice and cannot be used for purchase and facility plan. All legacy equipment trademarks belong to O.E.M.. © 2021 Allwin21 Corp. All Rights Reserved.

Upgrade Kit for Gasonics Aura 2000LL Plasma Asher

Why Upgrade Your Old Gasonics Aura 2000LL

3. Upgrade Kit for different robot configuration



All specification and information here are subject to change without notice and cannot be used for purchase and facility plan. All legacy equipment trademarks belong to O.E.M.. © 2021 Allwin21 Corp. All Rights Reserved.

Upgrade Kit for Gasonics Aura 2000LL Plasma Asher

Why Upgrade Your Old Gasonics Aura 2000LL

4.

No.	Description	Original Aura 2000LL	Upgraded Aura 2000LL
1	Controller	68000 CPU controller	Pentium computer
2	User interface	No	GUI
3	Data Storage	No	Hard Disk
4	Recipe edit	Not Easy	Easy
5	Diagnostic	Limited	More functions and I/O hardware “exposed” for easier maintenance and trouble shooting
6	Temperature measurement and control	Board Control	Omega CN79000
7	Wafer Transfer	Two Robot Configure	One PC controller for two Robot
9	Lamp Tower	No	Optional
10	GEM/SEC II	Limited	Optional
11	A/D precision	12bits	14-16bits
12	EOP	Basic	Advanced (Optional)

All specification and information here are subject to change without notice and cannot be used for purchase and facility plan. All legacy equipment trademarks belong to O.E.M.. © 2021 Allwin21 Corp. All Rights Reserved.

Upgrade Kit for Gasonics Aura 2000LL Plasma Asher



Allwin21 PC Controller

1. Main Menu



All specification and information here are subject to change without notice and cannot be used for purchase and facility plan. All legacy equipment trademarks belong to O.E.M.. © 2021 Allwin21 Corp. All Rights Reserved.

Upgrade Kit for Gasonics Aura 2000LL Plasma Asher



Allwin21 PC Controller

2. Recipe Edit

Exit Help

RECIPE EDIT

Recipe File 22 files

- X_190.RCP
- TEST2.RCP
- X_160.RCP
- X_170.RCP
- X_180.RCP
- X_190.RCP**
- X_190A.RCP

Home Page Up

← →

End Page Down

Tab Del

Exit

RECIPE NAME: K1 EXT: RCP CHECK SEC: 5 Engineer: Comments:

Save

PREHEAT FILE: PREHEAT EXT: RCP MAX INTEN: 30 Cool Temp: 220.0 Max Temp: 280.0 Init Angle: 680.0

Page Up

CHAMCALI NAME: SYS_LAMP EXT: WFR SENSITIVITY: 2.00 Psum: 1.00 DELAY: 12.00 Gain: 15.00

Step No.	Step Function	Time (sec)	Temp (°C)	Steady Intn Factor	Gas 1 CF4 SCCM	Gas 2 O2 SLPM	Gas 3 N2 SCCM	Gas 4 CC SLPM	Vacuum Pressure (Torr)	EndPoint DETECT	RF
1	Delay	5	0	1.00	0.00	4.50	0.00	0.00	3.50	0.00	OFF
2	Ramp	10	100	1.00	0.00	4.50	0.00	0.00	3.50	0.00	OFF
3	Steady	10	100	1.00	0.00	4.50	0.00	0.00	3.50	0.00	OFF
4	Steady	30	100	1.00	0.00	4.50	0.00	0.00	3.50	0.00	ON
5	Delay	60	0	1.00	0.00	0.00	0.00	0.00	0.00	0.00	OFF
6	Finish	0	0	1.00	0.00	0.00	0.00	0.00	0.00	0.00	OFF
7	Finish	0	0	1.00	0.00	0.00	0.00	0.00	0.00	0.00	OFF
8	Finish	0	0	1.00	0.00	0.00	0.00	0.00	0.00	0.00	OFF
9	Finish	0	0	1.00	0.00	0.00	0.00	0.00	0.00	0.00	OFF
10	Finish	0	0	1.00	0.00	0.00	0.00	0.00	0.00	0.00	OFF

Page Down

Ctrl-Ins LINE INSERT

Ctrl-Del LINE DELETE

Ctrl-F7 LINE COPY

Ctrl-F8 LINE PASTE

RECIPE NEW (F7)

MIN TC TEMP: 10

RECIPE GRAPH (F8)

RECIPE VALIDATE (F10)

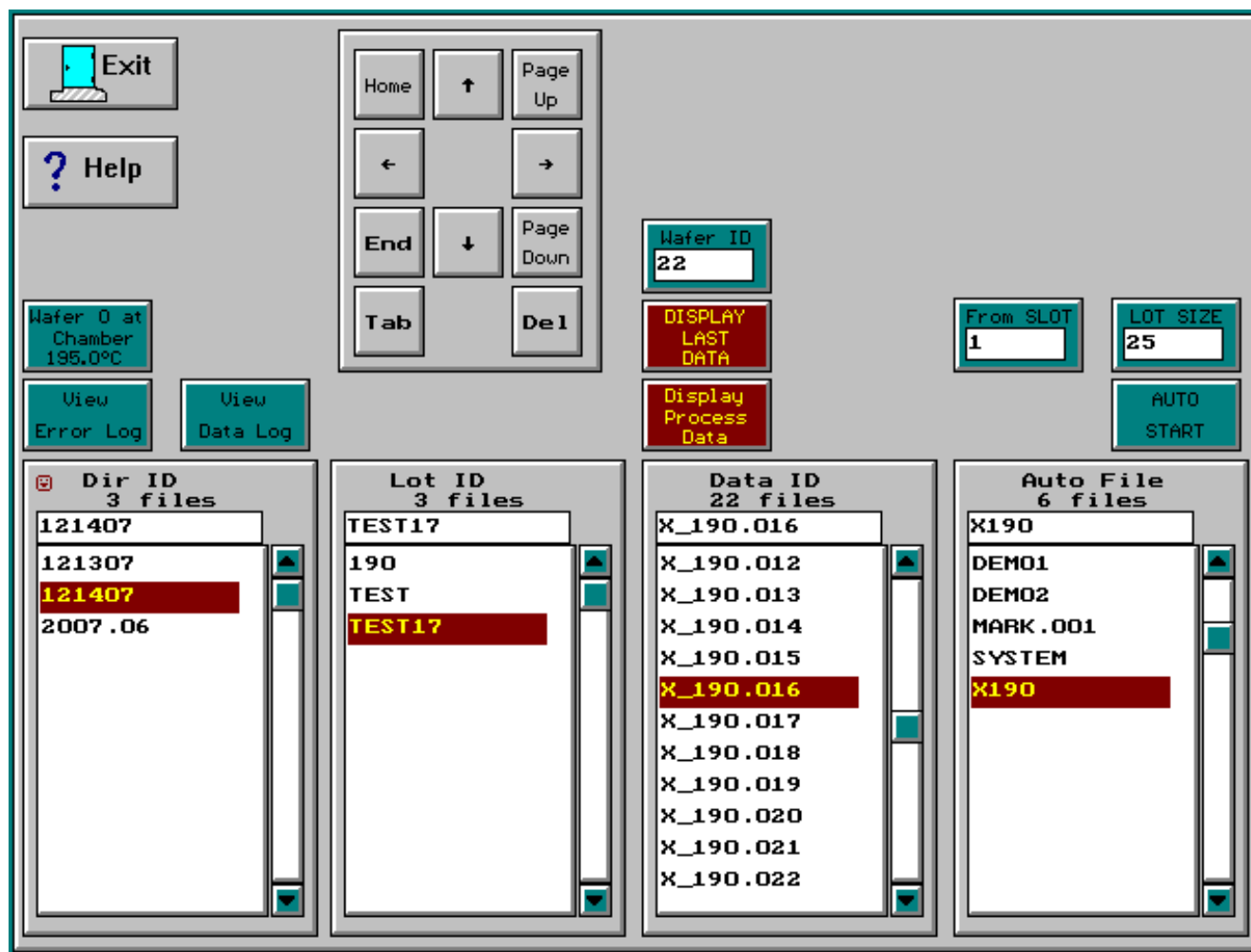
Press D,R,S,F or Space Bar to select Delay, Ramp, Steady, Wait or Finish funcion.

All specification and information here are subject to change without notice and cannot be used for purchase and facility plan. All legacy equipment trademarks belong to O.E.M.. © 2021 Allwin21 Corp. All Rights Reserved.

Upgrade Kit for Gasonics Aura 2000LL Plasma Asher

Allwin21 PC Controller

3. Process for Production

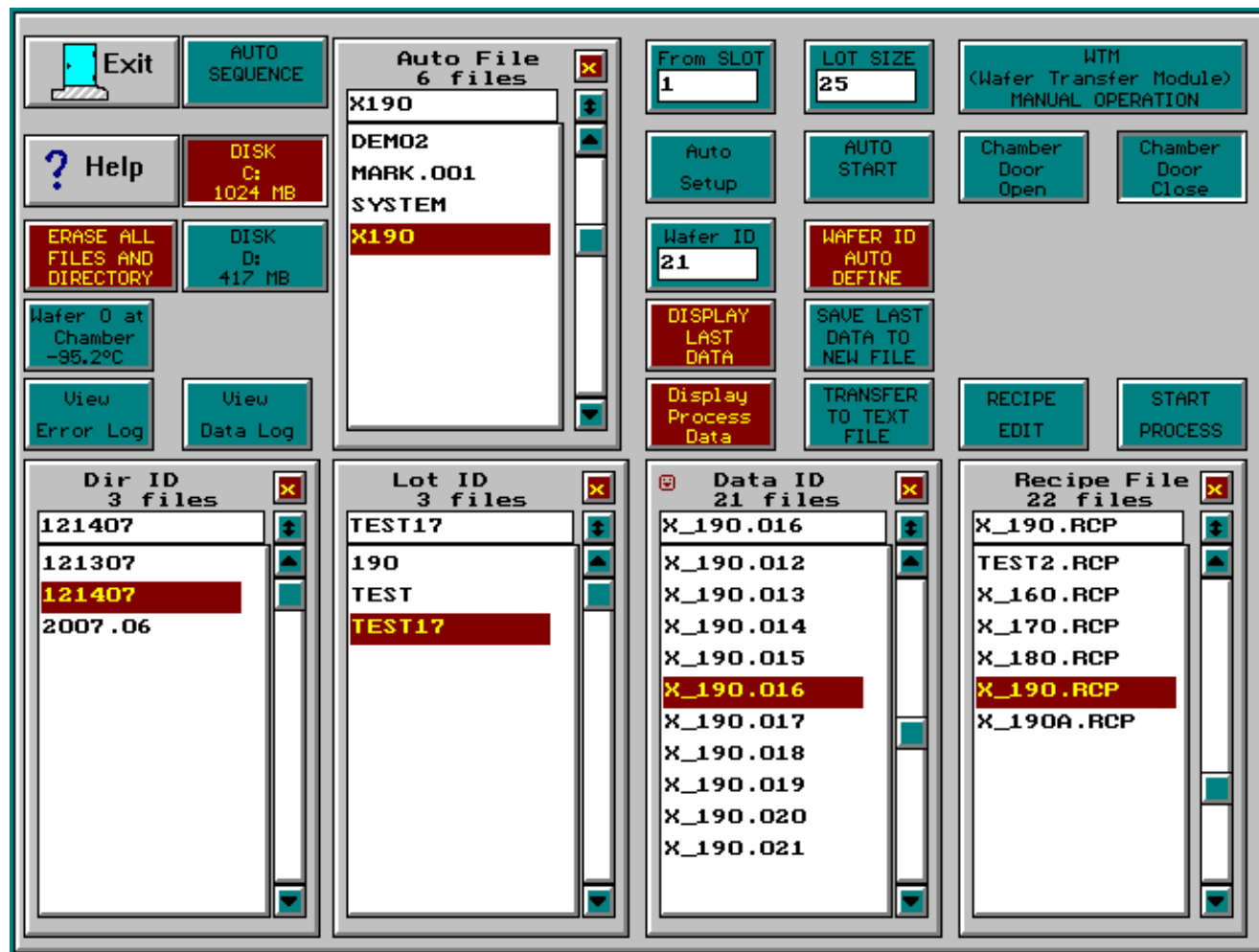


All specification and information here are subject to change without notice and cannot be used for purchase and facility plan. All legacy equipment trademarks belong to O.E.M.. © 2021 Allwin21 Corp. All Rights Reserved.

Upgrade Kit for Gasonics Aura 2000LL Plasma Asher

Allwin21 PC Controller

4. Process for Engineer



All specification and information here are subject to change without notice and cannot be used for purchase and facility plan. All legacy equipment trademarks belong to O.E.M.. © 2021 Allwin21 Corp. All Rights Reserved.

Upgrade Kit for Gasonics Aura 2000LL Plasma Asher

Allwin21 PC Controller

5.1 Robot Auto Sequence Setup Screen

Exit Help SAVE AUTO DATA VALIDATE CYCLE LOOP DISABLE ROBOT TEACH FILE NAME SYSTEM

Select Station

Send Cassette 3rd Cassette

Flat Aligner Susceptor Loader

Chamber Wafer Loader

Cooling Station Center Aligner

Receive Cassette

Process Sequence

Step	Action	Station
1	Send Cassette	ARM1
2	Chamber	ARM1
3	Receive Cassette	ARM1
4		ARM1
5		ARM1
6		ARM1
7		ARM1
8		ARM1
9		ARM1
10		ARM1
11		ARM1

CASSETTE SETUP

FROM SEND 1 CASSETTE BOTTOM 200

TO RECU 1 CASSETTE TOP 20

FROM SEND 2 CASSETTE BOTTOM 7

TO RECU 2 CASSETTE TOP

SLOTS 25 SKIP SLOT YES

WAFER SIZE 6.0 INCH

ABOVE LOCAL SETUP RECIPE EDIT Select Process Recipe

PROCESS RECIPE NAME KIONIX.RCP

AutoSet FILES 19 files

- KIO
- DEMO1
- DEMO2
- KIO**
- MARK.OO1
- RICK1
- RICK2
- RICK3

Recipe FILES 38 files

- KIONIX.RCP
- DEMO.RCP
- EOP.RCP
- KIONIX.RCP**
- PREHEAT.RCP
- PREHOT.RCP
- Q1
- RICK1.RCP

ALIGNER TIME 2

CHAMBER TIME 2

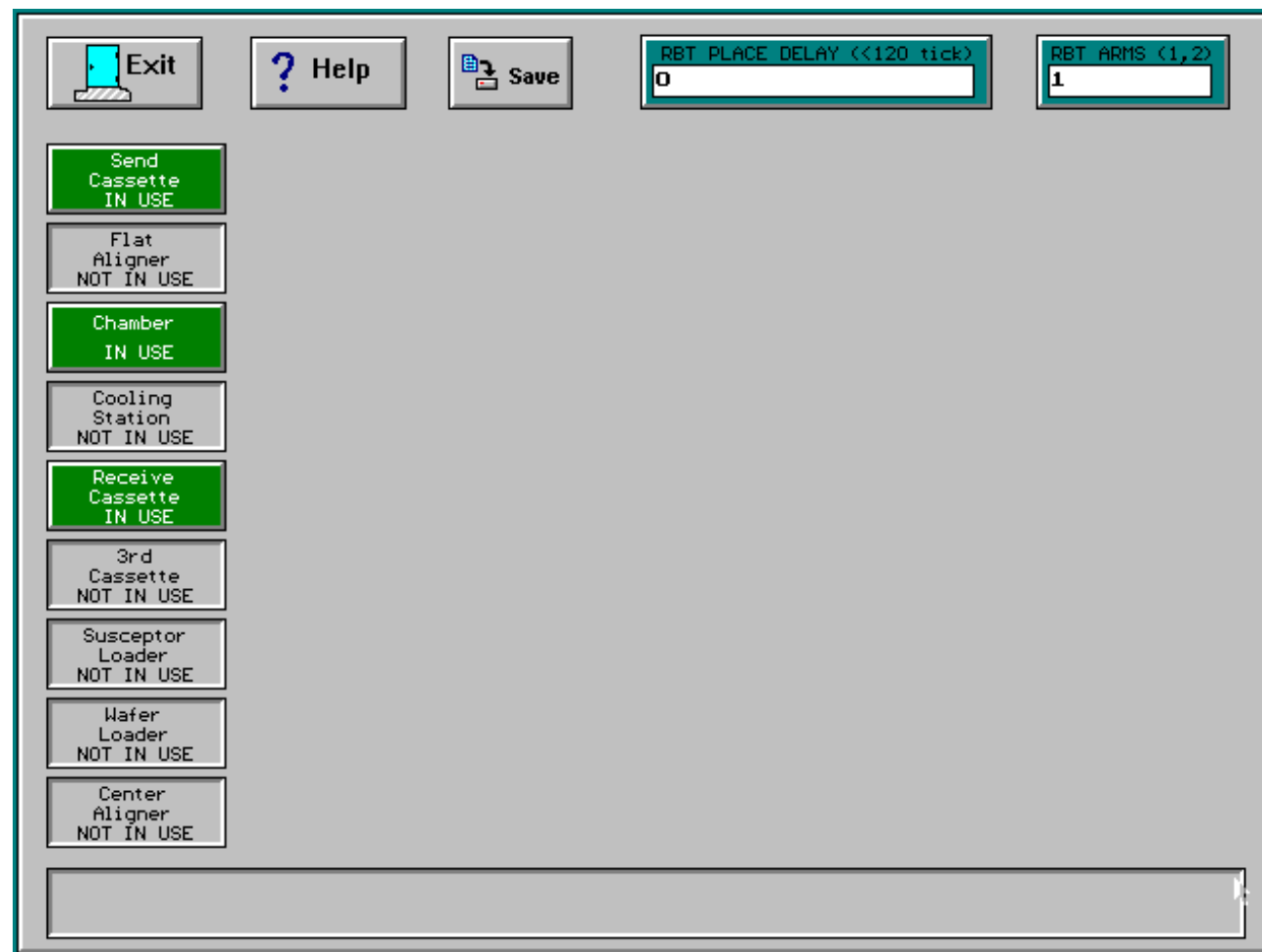
COOLING TIME 2

All specification and information here are subject to change without notice and cannot be used for purchase and facility plan. All legacy equipment trademarks belong to O.E.M.. © 2021 Allwin21 Corp. All Rights Reserved.

Upgrade Kit for Gasonics Aura 2000LL Plasma Asher

Allwin21 PC Controller

5.2 Robot Station Configure



All specification and information here are subject to change without notice and cannot be used for purchase and facility plan. All legacy equipment trademarks belong to O.E.M.. © 2021 Allwin21 Corp. All Rights Reserved.

Upgrade Kit for Gasonics Aura 2000LL Plasma Asher

Allwin21 PC Controller

5.3 Robot Speed Setup

The screenshot shows the 'Robot Speed Setup' interface with the following data:

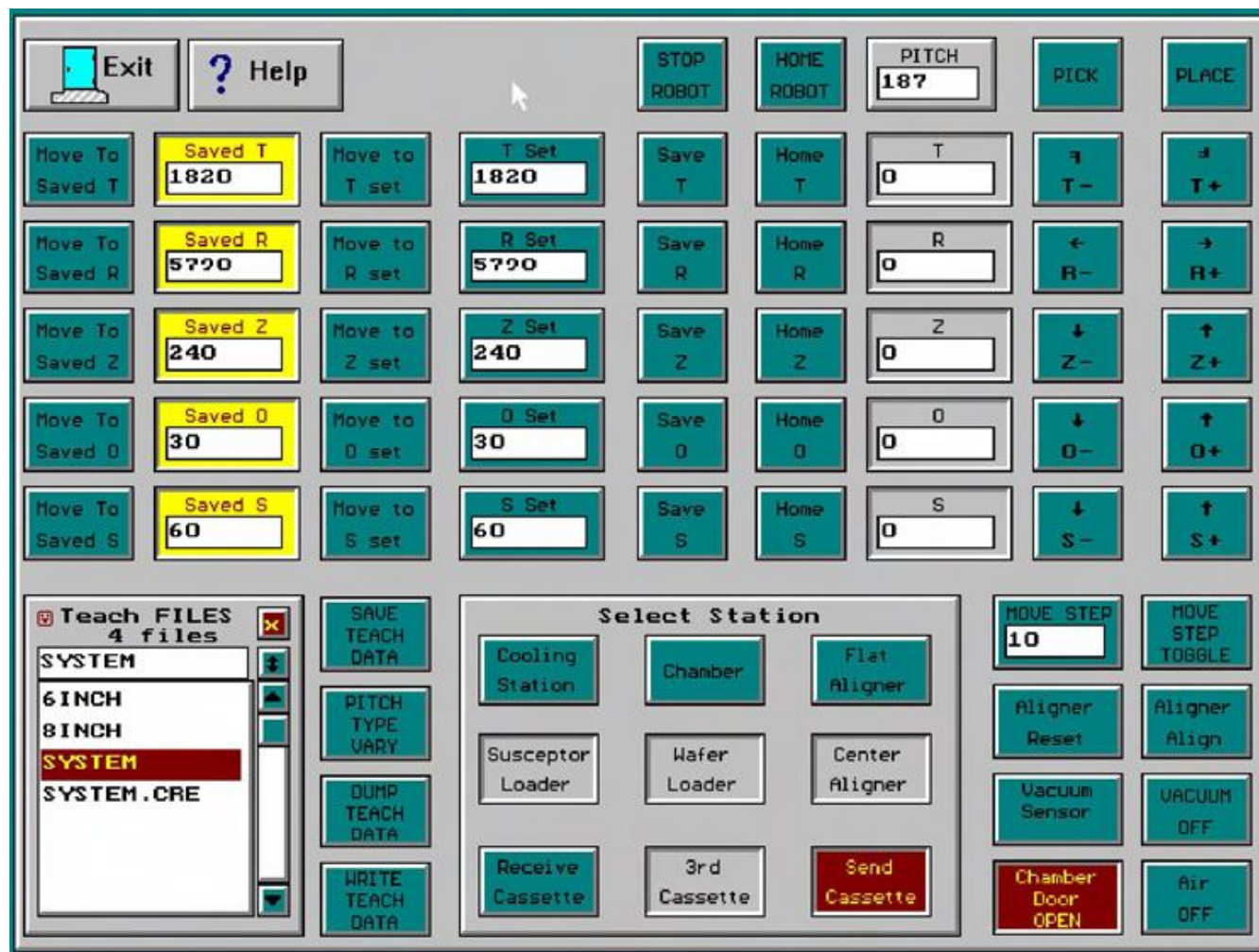
Section	Axis	Parameter	Value
ROBOT SPEED FOR WAFER	T	SPEED FOR T	3000
		ACCEL FOR T	3200
	R	SPEED FOR R	1000
		ACCEL FOR R	1200
	Z	SPEED FOR Z	300
		ACCEL FOR Z	900
	O,S	SPEED FOR O,S	75
		ACCEL FOR O,S	150
ROBOT SPEED FOR SUSCEPTOR	T	SPEED FOR T	1000
		ACCEL FOR T	1200
	R	SPEED FOR R	500
		ACCEL FOR R	600
	Z	SPEED FOR Z	200
		ACCEL FOR Z	600
	O,S	SPEED FOR O,S	50
		ACCEL FOR O,S	70
CUSTOMOR ROBOT SPEED	T	SPEED FOR T	0
		ACCEL FOR T	0
	R	SPEED FOR R	0
		ACCEL FOR R	0
	Z	SPEED FOR Z	0
		ACCEL FOR Z	0
	O,S	SPEED FOR O,S	0
		ACCEL FOR O,S	0

All specification and information here are subject to change without notice and cannot be used for purchase and facility plan. All legacy equipment trademarks belong to O.E.M.. © 2021 Allwin21 Corp. All Rights Reserved.

Upgrade Kit for Gasonics Aura 2000LL Plasma Asher

Allwin21 PC Controller

5.4 Robot Teach Screen



All specification and information here are subject to change without notice and cannot be used for purchase and facility plan. All legacy equipment trademarks belong to O.E.M.. © 2021 Allwin21 Corp. All Rights Reserved.

Upgrade Kit for Gasonics Aura 2000LL Plasma Asher

Allwin21 PC Controller

6. WTM Screen

Select Station
Chamber

Receive Cassette Send Cassette

FROM STATION Send Cassette FROM SLOT 1 PICK FROM (Send Cassette) MOVE FROM (Send Cassette) TO (Send Cassette)

TO STATION Send Cassette TO SLOT 1 PLACE TO (Send Cassette)

THROTTLE VALUE CLOSE 0 ANGLE 0

THROTTLE VALUE OPEN 0.00 O2 (SLPM) 0.00

VACUUM LEAK CHECK 0.000 N2 (SLPM) 0.000

MAIN VACUUM VALUE 0.000 CF4 (SCCH) 0.000

ROBOT STOP N2 (SLPM)

ROBOT HOME 12/17/07 15:36:41

FILAMENT OFF RF ON

RF forward(W) 0.0 Chamber Door Open

Pressure(Tr) 0.000 Chamber Door Close

Temp(°C) 2.4 VENT VALUE CLOSE

EOP(<) 0 SOFT START

Magnetron(A)

MAIN VACUUM OFF

Time(sec)

RUN PROCESS

RF REFL(W) 0.0

0x00:ee

0x08:ee

0x10:ee

TC : 2 ATM

Air Vacuum :

Time : Cool :
Arm1 :
θ :
Arm2 :
Z :

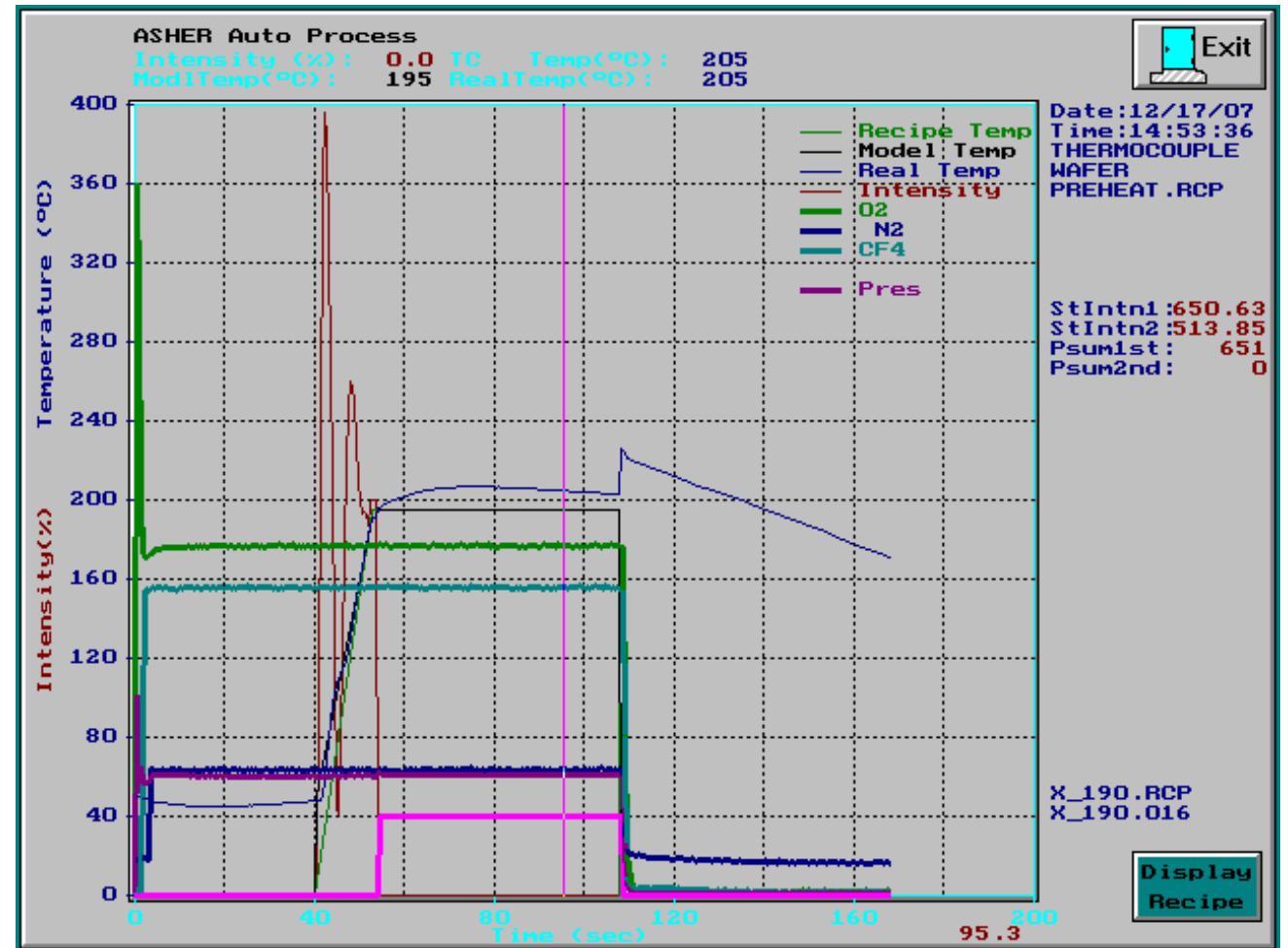
Exit

All specification and information here are subject to change without notice and cannot be used for purchase and facility plan. All legacy equipment trademarks belong to O.E.M.. © 2021 Allwin21 Corp. All Rights Reserved.

Upgrade Kit for Gasonics Aura 2000LL Plasma Asher

Allwin21 PC Controller

7. Process Monitor Screen

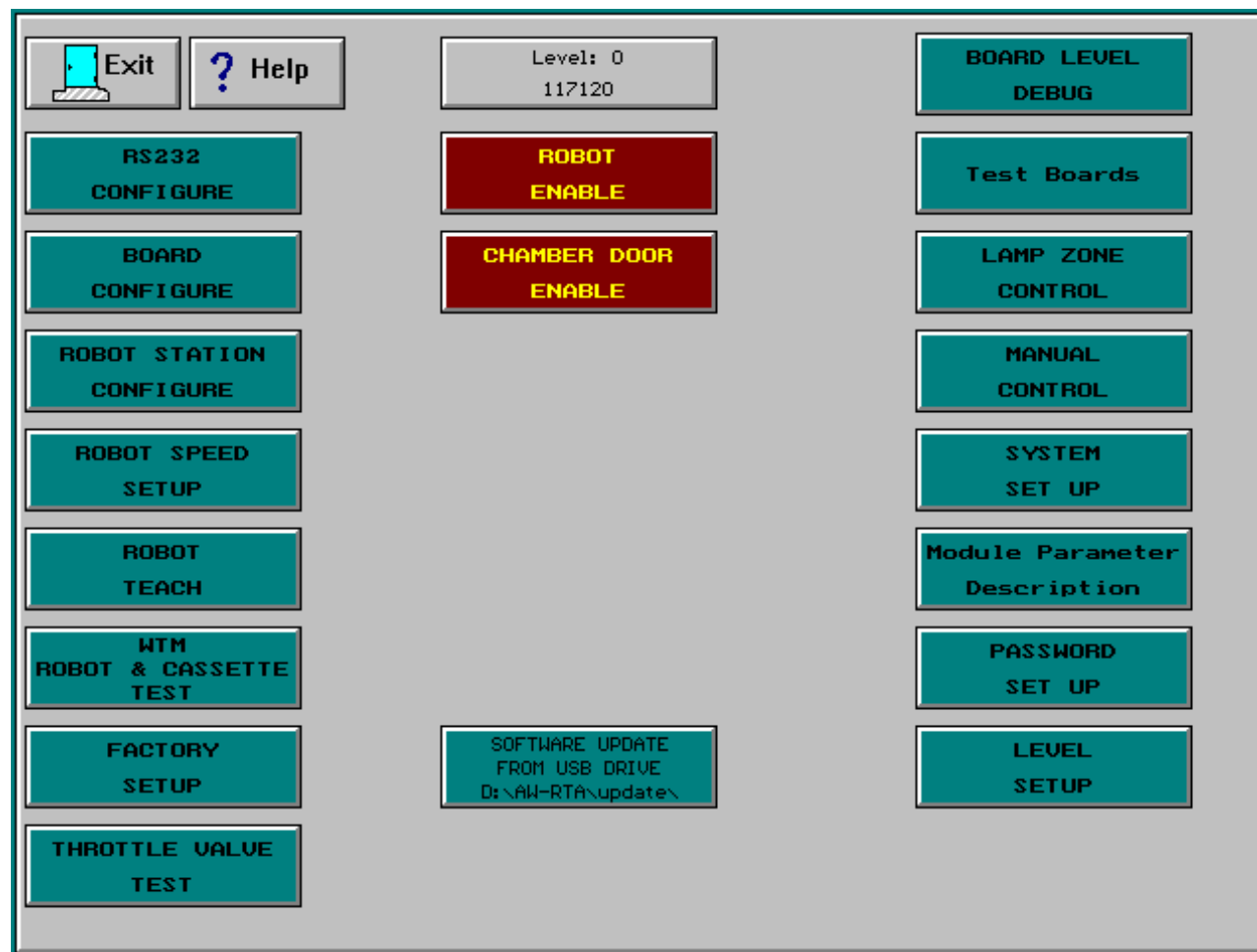


All specification and information here are subject to change without notice and cannot be used for purchase and facility plan. All legacy equipment trademarks belong to O.E.M.. © 2021 Allwin21 Corp. All Rights Reserved.

Upgrade Kit for Gasonics Aura 2000LL Plasma Asher

Allwin21 PC Controller

8. Maintenance Menu

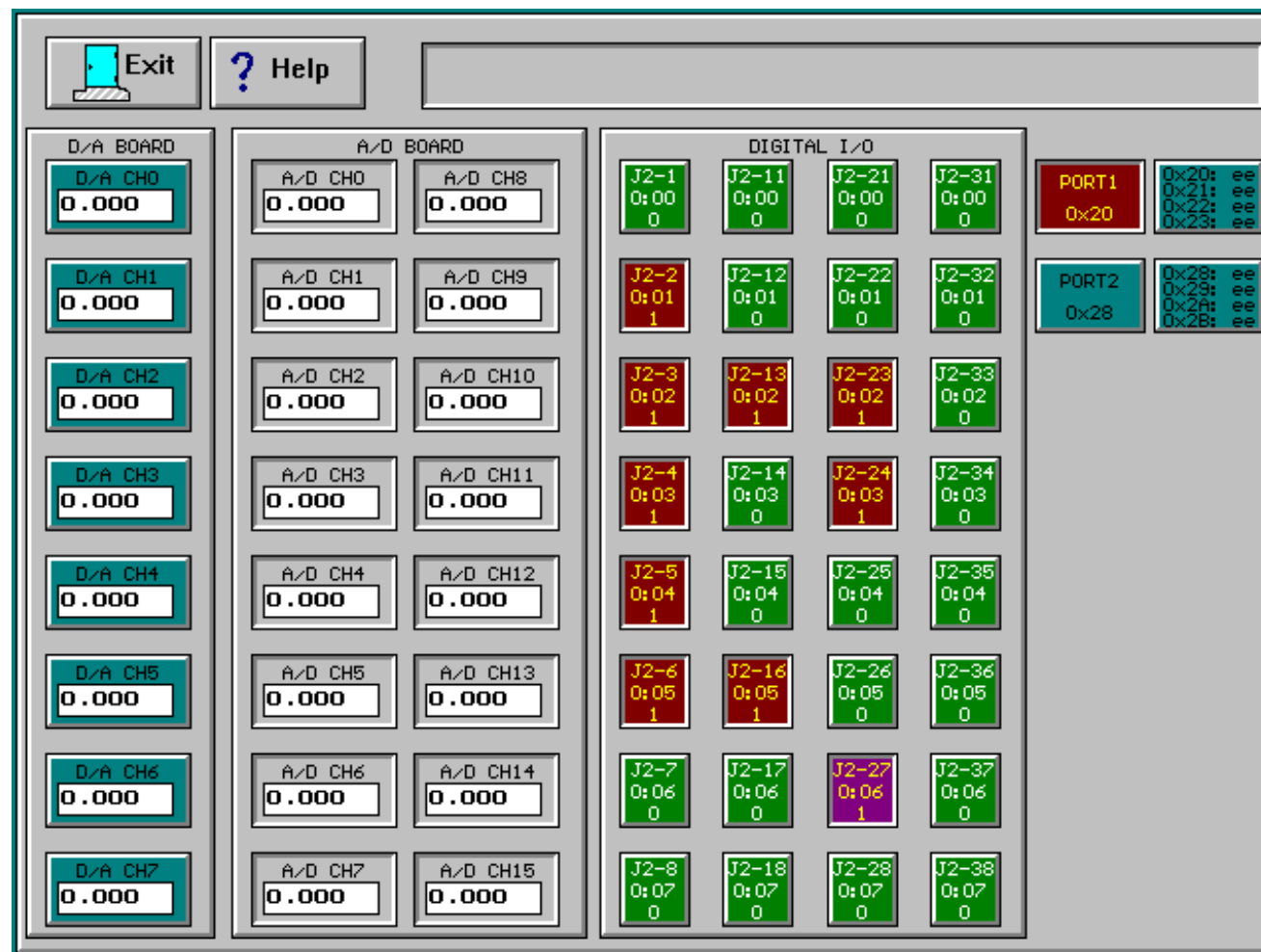


All specification and information here are subject to change without notice and cannot be used for purchase and facility plan. All legacy equipment trademarks belong to O.E.M.. © 2021 Allwin21 Corp. All Rights Reserved.

Upgrade Kit for Gasonics Aura 2000LL Plasma Asher

Allwin21 PC Controller

9. Board Test

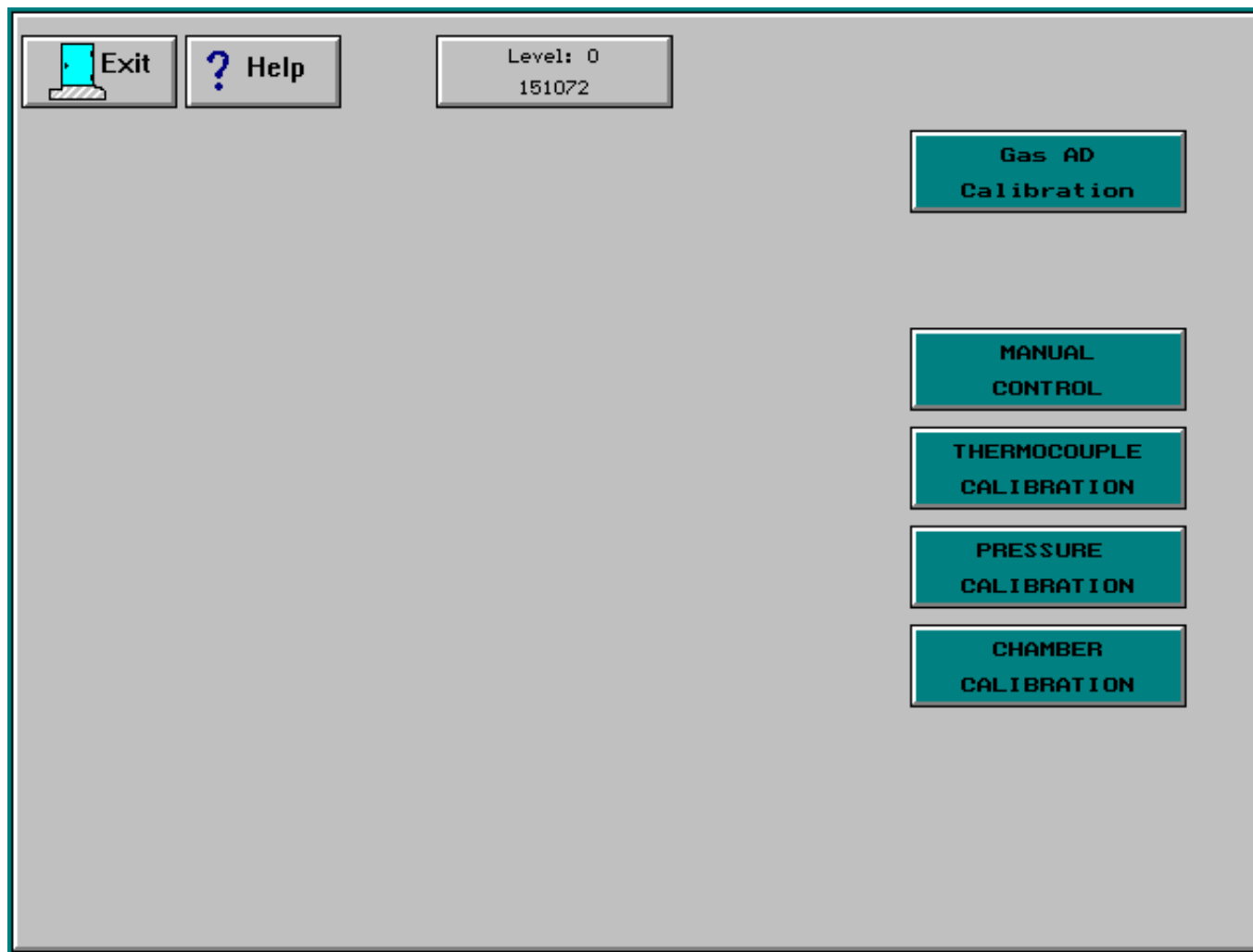


All specification and information here are subject to change without notice and cannot be used for purchase and facility plan. All legacy equipment trademarks belong to O.E.M.. © 2021 Allwin21 Corp. All Rights Reserved.

Upgrade Kit for Gasonics Aura 2000LL Plasma Asher

Allwin21 PC Controller

10. Calibration Menu



All specification and information here are subject to change without notice and cannot be used for purchase and facility plan. All legacy equipment trademarks belong to O.E.M.. © 2021 Allwin21 Corp. All Rights Reserved.

Upgrade Kit for Gasonics Aura 2000LL Plasma Asher

Allwin21 PC Controller

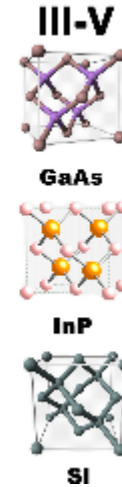
11. Factory Setup

Exit	Save	FACTORY LEVEL SET UP	CUSTOMER LEVEL SET UP	PRODUCTION FULL FUNCTION DISABLE	File Extent STANDARD
System Name AW-1008 4	LEVEL SET UP ENABLE	PLC Max speed 35	ROBOT TYPE EQUIP 200	CYCLE LOOP DISABLE	HARDWARE CHECK ENABLE
Screen Saver DISABLE	RS 232 CONFIGURE ENABLE	AW CNTL PLC 240	MINIMUM Z-AXIS -300	N2 PURGE DISABLE	WAFER VACUUM CHECK ENABLE
Source Code Check ENABLE	BOARDS CONFIGURE ENABLE	VALUE CNTL AW-152 MKS 253B	MINIMUM R-AXIS -4899		Wafer Type WAFER
Small Font DISABLE	ROBOT STATION CONFIGURE ENABLE	Throttle Max 1368	ROBOT SENSOR DISABLE at PICK	PROCESS VACUUM & RF ENABLE	MaxTemp (WFR) 350
Data Upload (RS232) DISABLE	ROBOT SPEED SET UP ENABLE	PLC factor 8	ROBOT SENSOR DISABLE at PLACE	CASSETTE LIGHT SET STATUS	Wafer Tot Num 1018
GEM SECS II DISABLE	ReOrder GAS NAME SEQUENCE DISABLE	BEEP ON TICKS 10	ROBOT INIT POSITION SEND	BEEP ON TICKS 12	TEMPERATURE AVERAGE NUM 4
RECIPE LOCAL SETUP ENABLE	MODIFY ZONE MAX COUNTER DISABLE	BEEP OFF TICKS 10	ROBOT IDLE POSITION SEND	BEEP OFF TICKS 0	
ROBOT Communication CHECK DISABLE	ZoneNum(2-8) 3	ALARM TEST	ROBOT Z AND T MOVE INDIVIDUAL ENABLE	LOT FINISH TEST	WaferSize 6 8 8 DISABLE

All specification and information here are subject to change without notice and cannot be used for purchase and facility plan. All legacy equipment trademarks belong to O.E.M.. © 2021 Allwin21 Corp. All Rights Reserved.

Upgrade Kit for Gasonics Aura 2000LL Plasma Asher

Let's *All win* in the 21st Century



Email: sales@allwin21.com

Upgrade Kit for Gasonics Aura 2000LL Plasma Asher

